

Osmose®



Aerial Services

The structures holding up the critical and complex network of electric and communications lines are a significant feature in every landscape across the globe. Wood utility poles can measure anywhere from 30 feet to 120 feet tall, while steel transmission structures start at 100 feet.

Without an effective above grade assessment, many issues may go unnoticed leaving electric utilities with potentially serious reliability issues and costly unaddressed risk. Aerial assessments provide a safe and efficient way to access all structure types above grade, avoiding safety exposure of climbing and expense of manned aircraft.

Osmose is a utility structure expert with 90 years of expertise. Our unique blend of cutting-edge technology, experienced personnel, and in-depth utility structure assessment knowledge sets us apart. Unlike a standard drone service provider, Osmose doesn't just provide pictures; we provide actionable insights. Our comprehensive report and condition assessment points the way forward, a priceless asset to utilities facing complex decisions.



Speed

Osmose deploys technology that supports faster assessments, ultimately providing timely information to electric utilities.



Scale

Osmose visits millions of poles annually, confirming our ability to scale to any size project across the country.



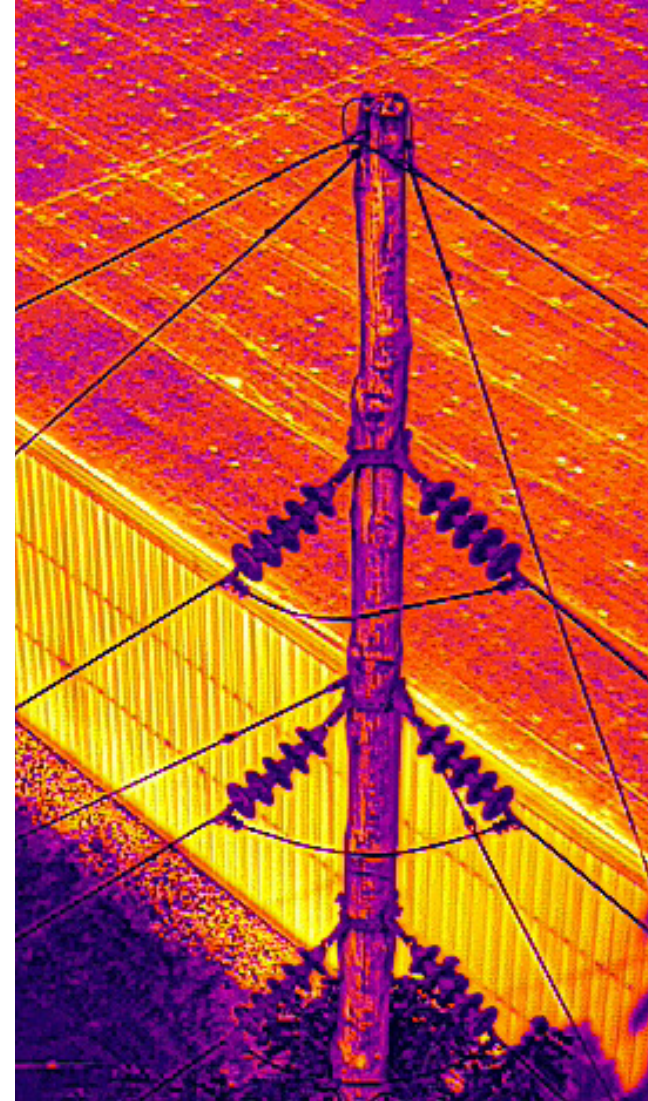
Accuracy

Osmose applies the latest technology to deliver accuracy and quality required by pole owners.

Why Osmose Aerial Services?

- FAA-certified pilot and trained visual observers perform safe and efficient flight operations
- Provide full-structure health assessment, including pole tops and crossarms
- Assess critical components including bolts and hardware, insulators, and damaged members
- High-quality images of defects
- Identify reliability issues
- Includes infrared assessments of equipment to identify hot spots
- Are available to remote or inaccessible structures (flooded areas, swamps, coastal locations)
- Can be used for post-storm response support and logistics
- Can be combined with patrols with overhead detailed assessments
- Includes a comprehensive report and individual structure condition assessment

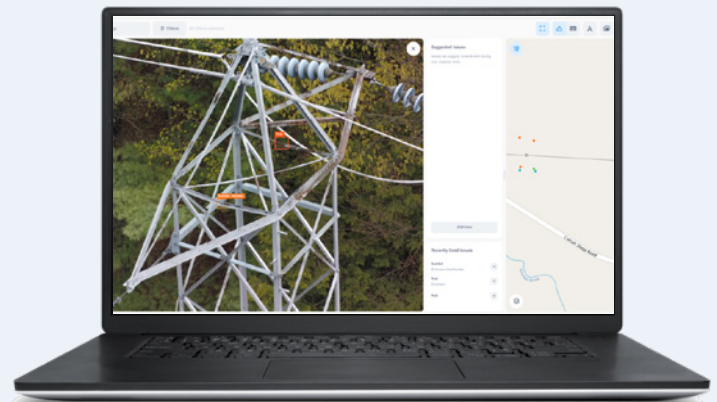
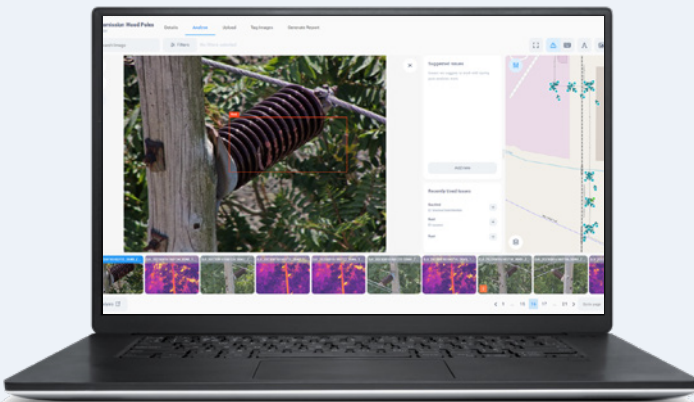
When combined with ground line assessment programs, transmission and distribution aerial assessments provide a comprehensive evaluation of the structure and attached equipment's condition.



Osmose Innovative Tools and Technologies

OsmoView™ Virtual Expert

Osmose utilizes a proprietary virtual assessment application to review images, identify issues, and prioritize defects needing remediation. Housed within our Osmose 360® portal, customers have access to the aerial assessment findings in an easy-to-use, central location.



To learn more, contact your local Osmose expert call 770.632.6700, or email drones@osmose.com.