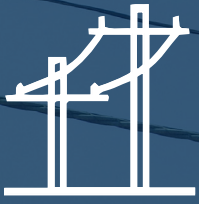


# Osmose®



## Asset & System Inventories

### **Cost-Effective Field Data Verification for Smart Grid and Broadband Initiatives**

Utilities rely on GIS data for outage management, smart grid applications, work management, and other engineering packages to support daily operations, future designs, and to respond to emergencies. These powerful analysis and decision support tools share one common trait – the need for highly accurate, connected data that describe their electrical network in great detail.

The current data needs of utilities' smart grid, 5G, and broadband initiatives are putting an unprecedented demand on the completeness, accuracy, and timeliness of this data.

Osmose specializes in specifying and implementing cost-effective approaches to converting, collecting, and maintaining this information with highly skilled technical field and GIS staff who safely and accurately execute a range of simple and complex field initiatives, such as:

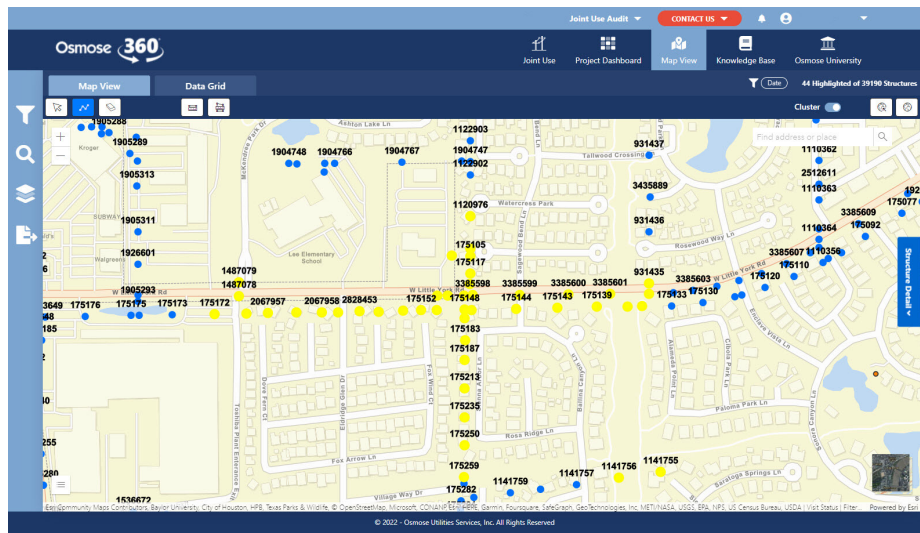
- System inventories and GIS mapping
- Customer-to-transformer surveys
- Joint use and NESC audits
- Street light audits
- Underground inventories and inspections
- Post-storm damage assessment





# System Inventories and GIS Mapping

Osmose utilizes experienced resources to accurately capture location, condition, and system attribute information on poles, equipment, conductors, and foreign attachments in order to help utilities verify the accuracy and completeness of their asset management systems-of-record. The technology we use supports bringing customer data to the field to perform verification and collection of data.



## Joint Use and NESC Audits

Osmose's results-oriented approach focuses on identifying customer requirements and maximizing the potential for return from the audit. Establishing accurate, transparent results allows us to provide customers with the tools necessary to meet project goals, from reconciling revenue of unauthorized attachments to reducing liability.

- ✓ Review attachment agreements, help build your business case
- ✓ Review audit initiative with attachers to maximize buy-in and maximize audit/rental recovery
- ✓ Execute the field audit and share (map-based) results with stakeholders and third parties
- ✓ Perform dispute resolution with attachers during audit
- ✓ Deliver accurate data to your system of record
- ✓ Support attacher billing and manage notifications in NJUNS to address violations and double-wood
- ✓ Satisfy NESC and GO95 clearance checks

## Post-Storm Damage Assessment

Shortly after the storm has passed, utilities need to restore their systems to pre-storm conditions. Osmose provides post-storm damage assessments updating your target systems, thereby expediting the restoration process. Osmose post-storm damage tools and processes can also provide additional information to support FEMA audits. Regardless of the size and type of the storm event, Osmose is a trusted resource to fill any role that is required, safely and professionally.



To contact your local Osmose expert, call 770.632.6700 or email [technicalservices@osmose.com](mailto:technicalservices@osmose.com).