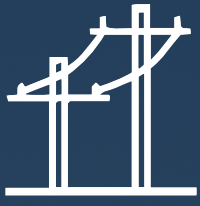


# Osmose®



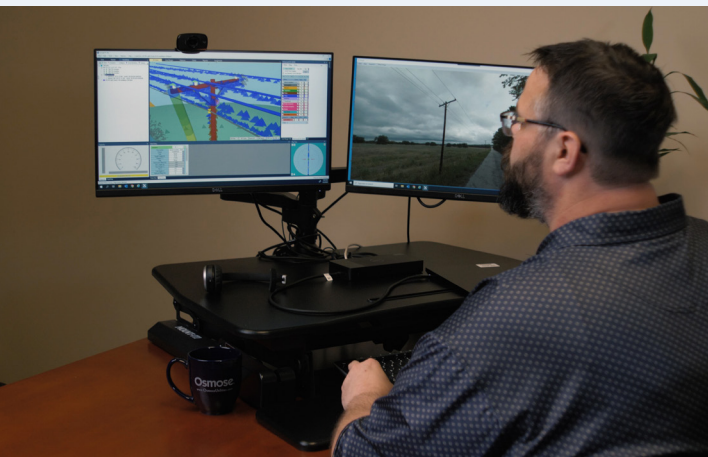
## Turnkey Broadband Services



Broadband providers are working as fast as possible to construct and deploy internet services to customers. Often times, providers need efficient permitting approval and minimal or low-cost make-ready to adhere to project milestones.

Osmose has been supporting broadband buildouts (wireline, wireless, underground) on behalf of **broadband providers and engineering firms** with:

- Pole owner process documentation
- Make-ready assessments to identify quantity and level
- Make-ready field surveys
- Pole loading analysis
- Clearance analysis
- Make-ready engineering designs
- Timely application submittals
- Pole owner coordination
- Experience working with all GIS formats



### Speed

Osmose deploys technology that supports faster surveys and assessments, ultimately assisting with faster deployment.



### Scale

Osmose visits millions of poles annually, confirming our ability to scale to any size broadband project across the country.



### Accuracy

Osmose's latest technology delivers the accuracy required by pole owners. We capture pole details and insights to allow for changes while minimizing re-collection

**Osmose has decades of experience working with both providers and pole owners.**  
**Over the past two years:**

**~1,000,000**

Poles surveyed and assessed for make-ready and delivered to providers to support fiber deployments

**267,000+**

Third-party application poles surveyed and assessed for make-ready and processed for pole owners

**30,000+**

Applications processed on behalf of pole owners or providers to permit new fiber

# Osmose Minimize Project Risk by Providing a Turnkey Solution

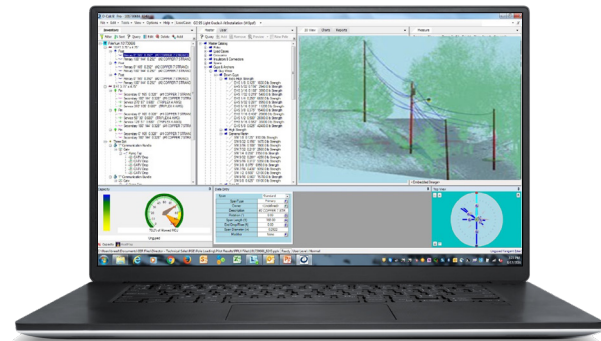
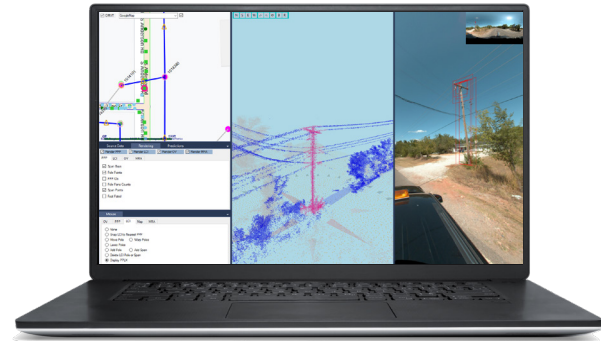
**Preliminary route make-ready assessment.** A rules-based high-level assessment or estimate of the make-ready effort required on a group of poles or fiber route. Helps broadband providers project costs and evaluate routes prior to full-scale make-ready surveys.

**Complete make-ready field surveys.** Detailed pole models with accurate measurements driven by Osmose's OsmoVision® technology. Crews can safely measure all pole attachments and conductor sizes, which are verified in the office to perform quality control and quickly resolve design discrepancies.

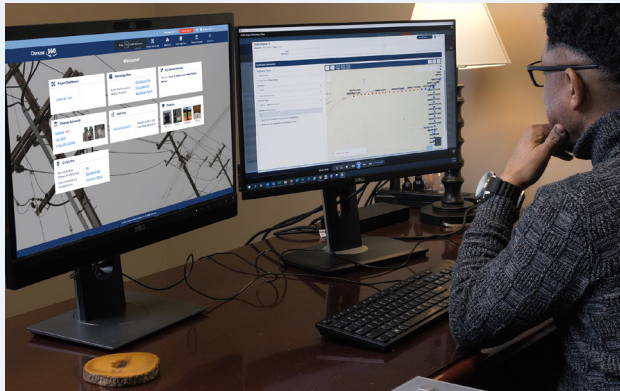
**Assess the impact of new attachments on pole load.** Low-cost load screening identifies new overload issues. For poles that fail screening, our industry-leading O-Calc® Pro software can perform a comprehensive load analysis and provide detailed make-ready recommendation reports.

**Deliver a "complete" application to the pole owner.** Osmose has significant experience submitting pole attachment applications. This experience ensures complete applications are submitted, streamlining the application process.

**Satisfy construction standards.** All designs adhere to both National Electrical Safety Code (NESC) requirements and the utility's construction standards.



## Osmose Innovative Tools and Technologies



### Osmose 360® for Joint Use

Osmose 360 for Joint Use is designed to provide pole owners a common platform for attachers to submit and track applications for attachment. Combined with easy to read status dashboards and reports, Osmose 360 for Joint Use ensures all stakeholders are fully connected throughout the attachment process, eliminating confusion about status and allowing for easy monitoring of performance and deadlines.



### OsmoVision®

OsmoVision is an industry-leading technology solution designed to effectively transform accurate LiDAR point clouds, pole images, and GPS into actionable data to improve the integrity and reliability of your distribution network and to improve the application for attachment process for telecommunication providers.

To contact your local Osmose expert, call **770.632.6700** or email **[technicalservices@osmose.com](mailto:technicalservices@osmose.com)**.