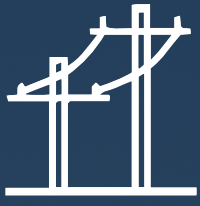


# Osmose®



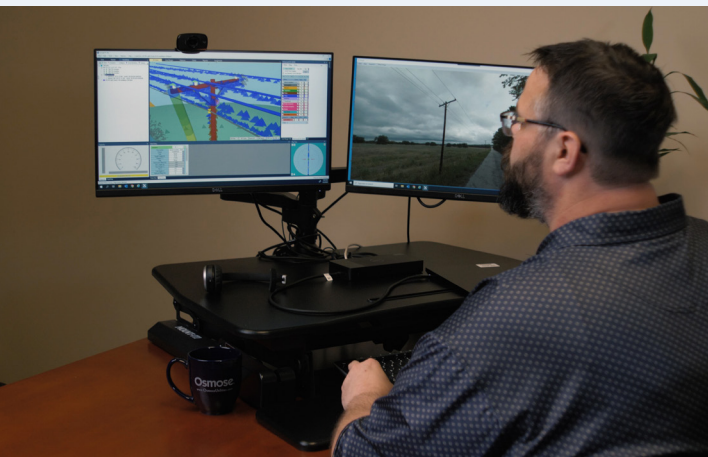
## Turnkey Broadband Services



Cooperative and municipal utilities are working to provide cost-effective fiber-to-the-home services to members while adhering to project milestones and the reporting structure needed to satisfy funding requirements.

For over 20 years, Osmose has been supporting broadband buildouts (wireline, wireless, underground) on behalf of **pole owners** with:

- Pole inventory and GIS delivery to support design
- Make-ready field surveys
- Pole loading analysis
- Clearance analysis
- Make-ready designs
- Timely application reviews
- Transfer coordination
- Staking, bill of materials, and work order updates
- Post construction audits



### Speed

Osmose deploys technology that supports faster surveys and assessments, ultimately assisting with faster deployment.



### Scale

Osmose visits millions of poles annually, confirming our ability to scale to any size broadband project across the country.



### Accuracy

Osmose applies the latest technology to deliver accuracy and quality required by pole owners.

**Osmose has decades of experience working with both providers and pole owners.**  
**Over the past two years:**

~1,000,000

Poles surveyed and assessed for make-ready and delivered to providers to support fiber deployments

267,000+

Third-party application poles surveyed and assessed for make-ready and processed for pole owners

30,000+

Applications processed on behalf of pole owners or providers to permit new fiber

# Osmose Minimize Project Risk by Providing a Turnkey Solution

**Complete make-ready field surveys.** Detailed pole models with accurate measurements driven by Osmose's OsmoVision® technology. Crews can safely measure all pole attachments and conductor sizes, which are verified in the office to perform quality control and quickly resolve design discrepancies.

**Assess the impact of new attachments on pole load.** Low-cost load screening identifies new overload issues. For poles that fail screening, our industry-leading O-Calc® Pro software can perform a comprehensive load analysis and provide detailed make-ready recommendation reports.

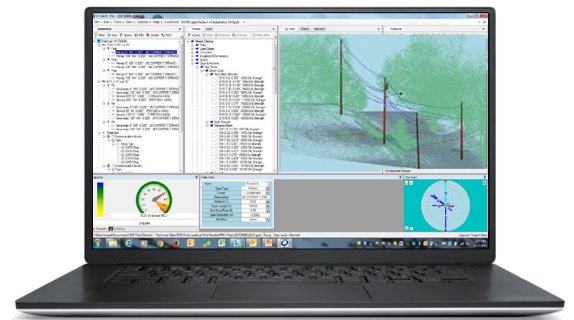
**Deliver a "complete" application to construction.** Osmose has extensive experience developing designs in the power and communications space.

**Satisfy construction standards.** Designs include Rural Utilities Service (RUS) codes for all electrical work, reconfiguration of power associated with pole replacements, and adhere to both National Electrical Safety Code (NESC) requirements and the utility's construction standards.

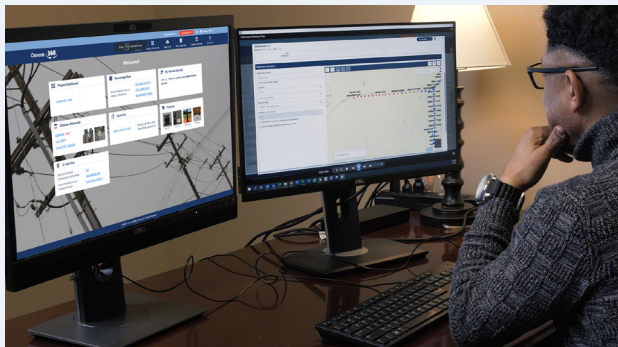
**Combine pole inspection with make-ready surveys.** Ensure poles are in good condition and have the strength required to support the new attachment before construction begins.

**Perform post-construction audits.** Verify the proper installation of equipment and cables on overhead structures and update work management records to reflect the "as built" condition is a critical component of maintaining a safe and reliable system.

Osmose can manage the entire process as a turnkey solution or provide individual components to most efficiently support our customers' needs.



## Osmose Innovative Tools and Technologies



### Osmose 360® for Joint Use

Osmose 360 for Joint Use is designed to provide pole owners a common platform for attachers to submit and track applications for attachment or as a project tracking tool to review the status of make-ready projects where the pole owner is deploying their own fiber. Combined with easy-to-read status dashboards and reports, Osmose 360 for Joint Use ensures all stakeholders are fully connected throughout the attachment process, eliminating confusion about status and allowing for easy monitoring of performance and deadlines.

### OsmoVision®

OsmoVision is an industry-leading technology solution designed to effectively transform accurate LiDAR point clouds, pole images, and GPS into actionable data to improve the integrity and reliability of your distribution network and to improve the application for attachment process for telecommunication providers.

To contact your local Osmose expert, call **770.632.6700** or email **[technicalservices@osmose.com](mailto:technicalservices@osmose.com)**.