

# Joint Use Management Services

Osmose works with structure owners throughout the United States performing joint use management services and collecting information on millions of poles each year.

**Rental Agreements Review** – most contracts are expired or out of date

**Attachment Surveys** – a majority of audits find 5-7% new attachments within a five year interval which could be lost revenue for your utility

**Cost Recovery** – you can share the cost of an audit with licensees

**Back Billing** – attachments without applications are considered unauthorized and have a fine associated with them

**Clearance Analysis** – improper attachments put you and the public at risk

**Data Integration** – data drives decisions, making accurate GIS data critical

**Double Wood Remediation** – double wood (stub) poles are a growing issue

**Pole Replacement Design and Work Orders** – associated with new attachment requests or poles in need of replacement due to condition

**Make-Ready Management** – due to the large amounts of public and private funding available but with tight reporting and schedule requirements

**Pole Loading** – assess pole capacity and risk with attachment requests



## Joint Use Program Performance Roadmap

Each phase represents a standalone engagement, delivering measurable financial and operational improvement to your program while improving data accuracy, billing, and system safety. Data collected at each phase feeds the next, reducing field trips and lowering overall costs.

1	Joint Use Audit	<ul style="list-style-type: none"><li>• Review existing agreements; issue third party notifications</li><li>• Specific field collection while leveraging visit to the pole</li></ul>	<ul style="list-style-type: none"><li>• Display audit results online to support revenue recovery, violation remediation, and double wood next steps</li><li>• Include overhead reliability with audit</li></ul>
2	Double Wood & Violation Remediation	<ul style="list-style-type: none"><li>• Establish multi-year plan to address existing NJUNS/SPANS tickets</li><li>• Incorporate input from test and treat programs to reduce field visits</li><li>• Manage transfers, pull, and disposal of double wood</li></ul>	<ul style="list-style-type: none"><li>• Resolve other types of NJUNS/SPANS tickets (i.e. violations)</li><li>• Pole replacement and design</li><li>• Coordinate construction and perform as-built audit</li></ul>
3	Managing Third Party Make-Ready Applications	<ul style="list-style-type: none"><li>• Establish online application request ticketing system</li><li>• Incorporate pole loading review into application process</li><li>• Support entire application review process as turnkey service</li></ul>	<ul style="list-style-type: none"><li>• Coordinate pole replacements</li><li>• Manage to volume, adhering to FCC requirements</li></ul>

# Capabilities and Benefits

Osmose has developed a unique approach to joint use management over the last 30 years. The typical approach of collecting attachment information and simply updating billing is outdated and ineffective. Osmose starts with a review of the customer's joint use agreements, requirements, and goals to build the right program.

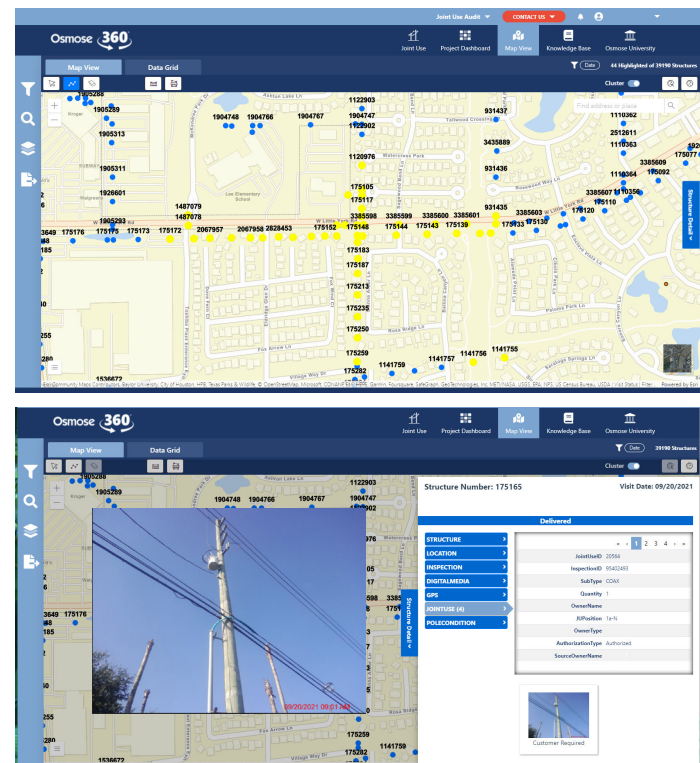
Capabilities	Standard	Intermediate	Detailed	Benefit to Your Program
Pole attributes	✓	✓	✓	Verify and update asset registry
Attachments (type, count, owner)	✓	✓	✓	Verify and support billing and transfers
Pole top images	✓	✓	✓	Supports billing, evidence of violations, condition issues, and insight for design and construction
Identification of violations, safety hazards, double wood	✓	✓	✓	Promotes compliance and safety
Attachment heights (power and communication)		✓	✓	Pole modeling, clearance evaluation, make-ready design
Annotated pole images (attachments, heights)		✓	✓	Visual depiction of attachments with heights as captioned information
Span lengths and angles			✓	Pole modeling, load assessment, and hardening
Pole load assessment			✓	Flag potentially overloaded poles

## Osmose 360® Joint Use Audit

The most important step in building an audit strategy is collaborating with your major stakeholders, including the attaching companies and pole owners. Successful recovery of audit and rental fees require the survey data to be accurate and defensible.

Osmose 360 Joint Use Audit provides secure access to audit results and supports a unique cost-recovery process tying attachment invoices to specific map views showing each attaching company only where they are located, facilitating an interactive process with full transparency.

- Quickly highlight violations identified on your system and who's on the pole
- Filter attachments by owner to support audit cost-recovery and rental billing invoices
- Pole images associated to pole records illustrate what's on the pole
- Drives quick remediation of third party discrepancies by supporting group/team online review
- Effectively direct construction crews to remediation work sites



To contact your local Osmose expert, call 770.632.6700 or email [technicalservices@osmose.com](mailto:technicalservices@osmose.com).